

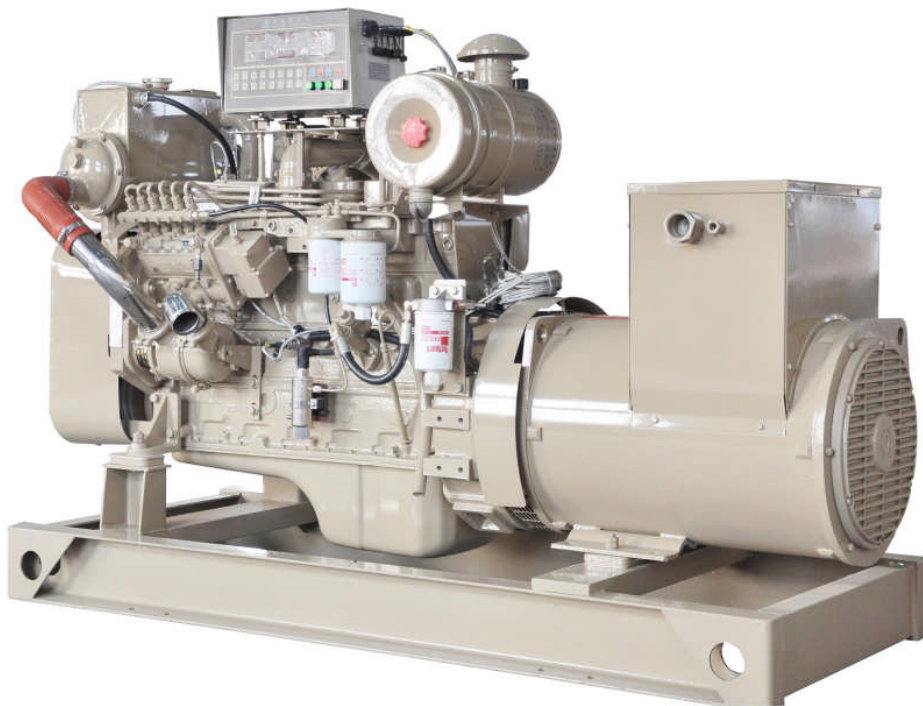


Etone Power Co.,Ltd.

<http://www.etonepower.com>

Model : ETCJC150

Generating set Technical Data Sheet



NO:ETCJC150

© 2012 copy right at Etone Power Co.,Ltd.

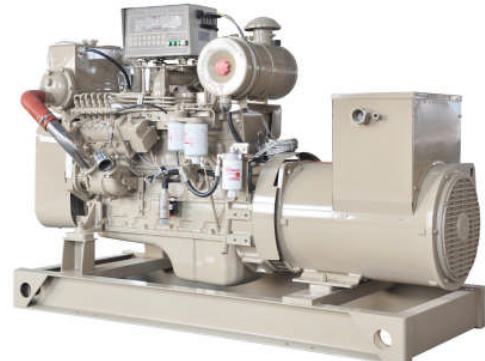
ISO9001:2008



STANDARD SPECIFICATION

General features:

- Coupled with Cummins diesel engine and Marathon alternator
- 24V DC start motor
- Brushless, Self-excited, IP23, insulation class H alternator



Genset Main Technical Data

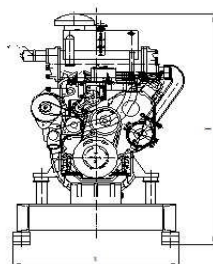
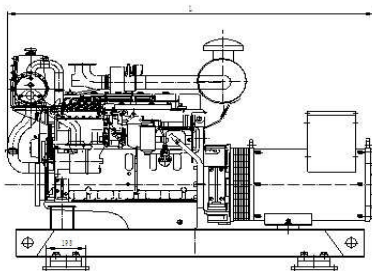
3-PH, 50Hz@1500RPM, 400/230V (Also Can Be Made According To Customers' Special Requirements)

Voltage	HZ	Phase	PF (COS ϕ)	Output (KW)
400/230V	50	3	0.8	150

Criterion

- GB/T13032-1991
- ISO9001:2008 Quality Control System
- CCS approved

Dimension and Weight



Open Type

Overall size (L*W*H)

2400x900x1400

Weight:1950kg

ENGINE SPECIFICATION

Cummins Diesel Engine

Technical Data

Engine Model	6LTAA8.9-GM200
Number of Cylinders	6 cylinders in line
Cycle	4 stroke
Aspiration	Turbocharged after air-air cooled
BorexStroke	114x 144 mm

**Powered by
Cummins Engine**

**6LTAA8.9-GM200
Generating Set**

Displacement	8.9 L
Compression ratio	17.0:1
Prime Power/Speed	200KW /1500 rpm
Speed Governor	electrical
Cooling System	By heat exchanger
Fuel Consumption at 100% Load	198 g/kw.h
Starter Motor	DC24V,


Alternator SPECIFICATION

Marathon Alternator (Standard)

Technical Data

Alternator Model	MP-H-150-4
Prime power	150KW
Frequency/speed	50HZ/1500rpm
Exciter type	Brushless, Self-excited
Power factor	0.8
Insulation Grade	H
Protection Grade	IP23
Phase / wire	3 phase 4 wires

Control System

Model	MFKC200AG
<ul style="list-style-type: none"> * Microcomputer digital control, and reliable work; * Digital display of parameters of diesel engine, and integration of measuring and monitoring; * Modularization of functional configuration, and integration of product structures; * Resistance to vibration, humidity, salt mist and high/low temperature; * Powerful ability to resist interference, convenient installation and use, and high performance-price ratio; * Remote monitoring of running parameters; * Automatic zero set of lubricating oil pressure * Accumulation of running period of diesel engine. 	
	

Supply documents

a. Alternator operation and maintenance manual CCS certificate	1PC 1PC
b. Engine operation and maintenance manual CCS certificate	1PC 1PC
c. Generator CCS certificate Overall drawings of the set ELECTRIC SYSTEM DRAWING Bench test Packing list	1PC 1PC 1PC 1PC 1PC
d. Control panel CCS certificate operation and maintenance manual	1PC 1PC

Picture of packing



Etone Power Co.,Ltd.