

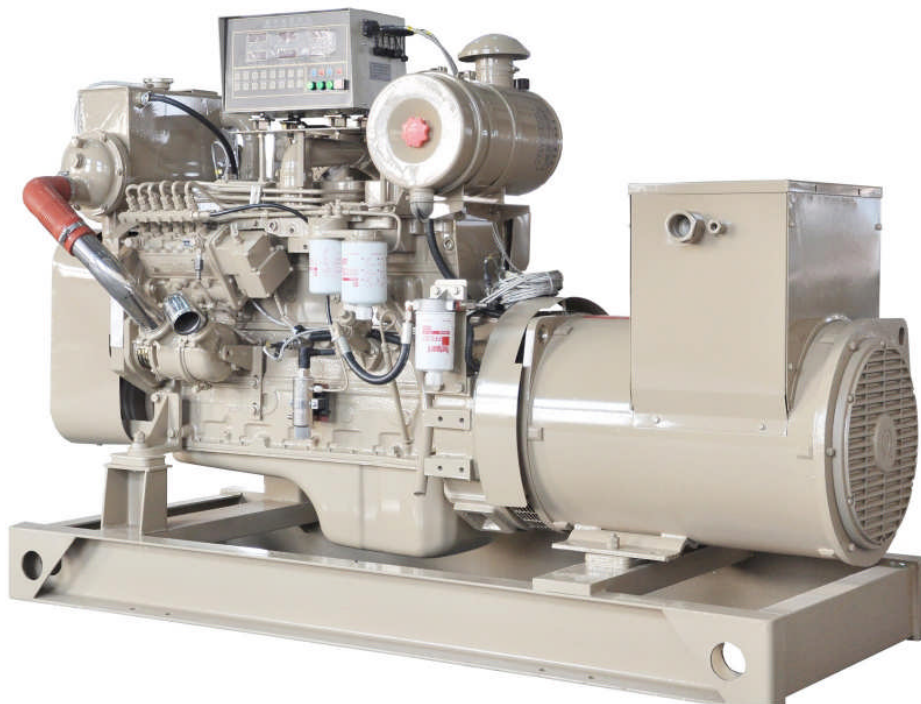


Etone Power Co.,Ltd.

<http://www.etonepower.com>

Model : ETCJC64

Generating set Technical Data Sheet



NO:ETCJC64

© 2012 copy right at Etone Power Co.,Ltd.

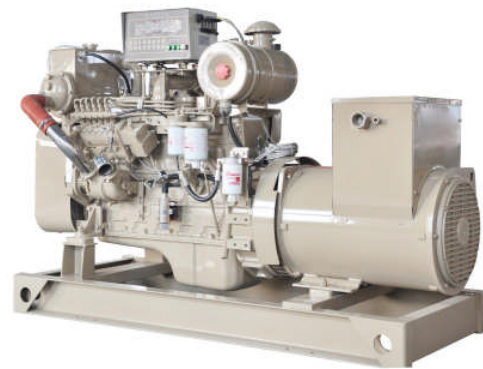
ISO9001:2008



STANDARD SPECIFICATION

General features:

- Coupled with Cummins diesel engine and Marathon alternator
- 24V DC start motor
- Brushless, Self-excited, IP23, insulation class H alternator



Genset Main Technical Data

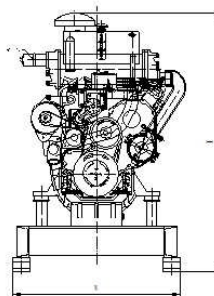
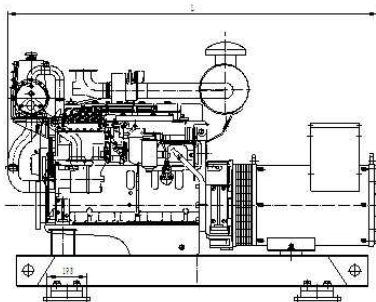
3-PH, 50Hz@1500RPM, 400/230V (Also Can Be Made According To Customers' Special Requirements)

Voltage	HZ	Phase	PF ($\cos \phi$)	Output (KW)
400/230V	50	3	0.8	64

Criterion

- GB/T13032-1991
- ISO9001:2008 Quality Control System
- CCS approved

Dimension and Weight



Open Type

Overall size (L*W*H)

1850x820x1350

Weight:1200kg

ENGINE SPECIFICATION

Cummins Diesel Engine

Technical Data

Engine Model	6BT5.9-GM83
Number of Cylinders	6 cylinders in line
Cycle	4 stroke
Aspiration	Turbocharged

**Powered by
Cummins Engine**

**6BT5.9-GM83
Generating Set**

BorexStroke	102 x120 mm
Displacement	5.9 L
Prime Power/Speed	83KW / 1500rpm
Speed Governor	electrical
Cooling System	By heat exchanger
Fuel Consumption at 100% Load	212g/kw.h
Starter Motor	DC24V,

Alternator SPECIFICATION

Marathon Alternator (Standard)

Technical Data

Alternator Model	MP-H-64-4
Prime power	64KW
Frequency/speed	50HZ/1500rpm
Exciter type	Brushless, Self-excited
Power factor	0.8
Insulation Grade	H
Protection Grade	IP23
Phase / wire	3 phase 4 wires

Control System

Model	MFKC200AG
<ul style="list-style-type: none"> * Microcomputer digital control, and reliable work; * Digital display of parameters of diesel engine, and integration of measuring and monitoring; * Modularization of functional configuration, and integration of product structures; * Resistance to vibration, humidity, salt mist and high/low temperature; * Powerful ability to resist interference, convenient installation and use, and high performance-price ratio; * Remote monitoring of running parameters; * Automatic zero set of lubricating oil pressure * Accumulation of running period of diesel engine. 	
	

Supply documents

<p>a. Alternator operation and maintenance manual CCS certificate</p>	<p>1PC 1PC</p>
<p>b. Engine operation and maintenance manual CCS certificate</p>	<p>1PC 1PC</p>
<p>c. Generator CCS certificate Overall drawings of the set ELECTRIC SYSTEM DRAWING Bench test Packing list</p>	<p>1PC 1PC 1PC 1PC 1PC</p>
<p>d. Control panel CCS certificate operation and maintenance manual</p>	<p>1PC 1PC</p>

Picture of packing



Etone Power Co.,Ltd.