

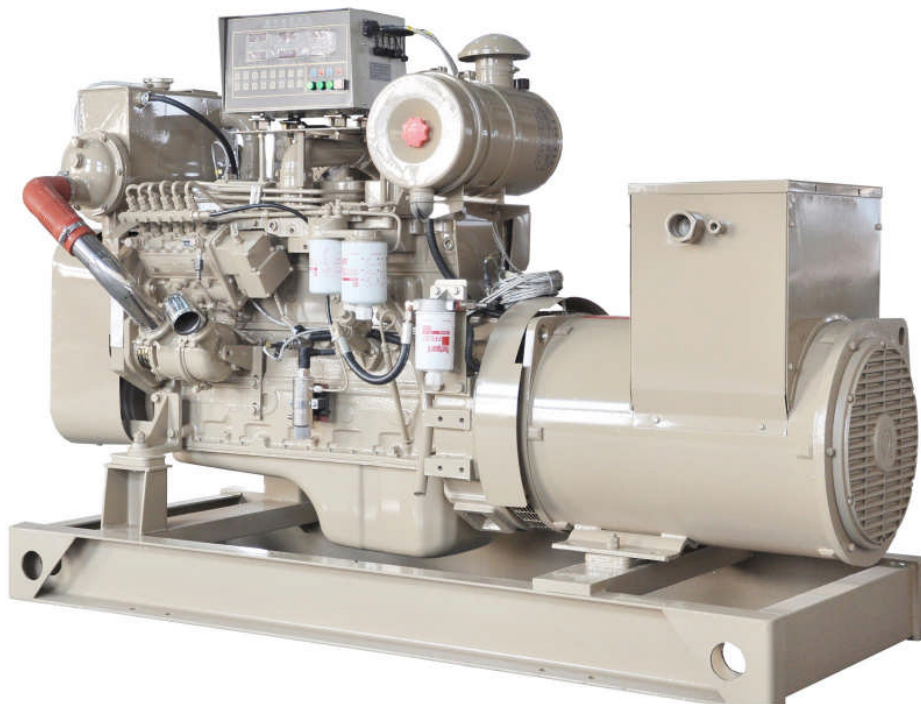


Etone Power Co.,Ltd.

<http://www.etonpower.com>

Model : ETCJC80

Generating set Technical Data Sheet



NO:ETCJC80

© 2012 copy right at Etone Power Co.,Ltd.

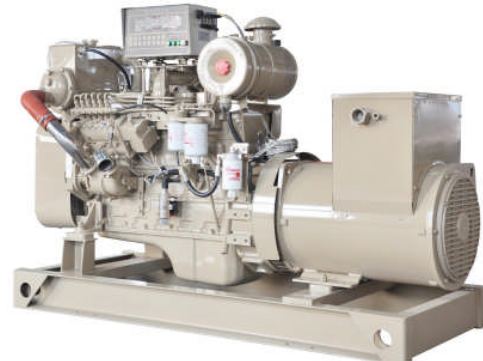
ISO9001:2008



STANDARD SPECIFICATION

General features:

- Coupled with Cummins diesel engine and Marathon alternator
- 24V DC start motor
- Brushless, Self-excited, IP23, insulation class H alternator



Genset Main Technical Data

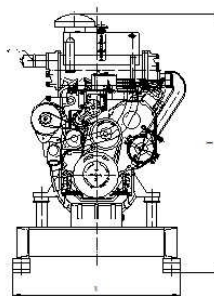
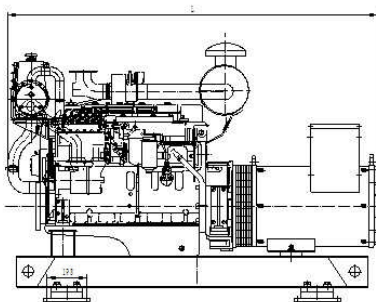
3-PH, 50Hz@1500RPM, 400/230V (Also Can Be Made According To Customers' Special Requirements)

Voltage	HZ	Phase	PF ($\text{COS } \phi$)	Output (KW)
400/230V	50	3	0.8	80

Criterion

- GB/T13032-1991
- ISO9001:2008 Quality Control System
- CCS approved

Dimension and Weight



Open Type

Overall size (L*W*H)

1900x850x1400

Weight:1300kg

ENGINE SPECIFICATION

Cummins Diesel Engine

Technical Data

Engine Model	6BTA5.9-GM100
Number of Cylinders	6 cylinders in line
Cycle	4 stroke

Aspiration	Turbocharged and aftercooled
Bore×Stroke	102 x120 mm
Displacement	5.9 L
Prime Power/Speed	100KW / 1500rpm
Speed Governor	electrical
Cooling System	By heat exchanger
Fuel Consumption at 100% Load	212 g/kw.h
Starter Motor	DC24V,


Alternator SPECIFICATION

Marathon Alternator (Standard)

Technical Data

Alternator Model	MP-H-80-4
Prime power	80KW
Frequency/speed	50HZ/1500rpm
Exciter type	Brushless, Self-excited
Power factor	0.8
Insulation Grade	H
Protection Grade	IP23
Phase / wire	3 phase 4 wires

Control System

Model	MFKC200AG
<ul style="list-style-type: none"> * Microcomputer digital control, and reliable work; * Digital display of parameters of diesel engine, and integration of measuring and monitoring; * Modularization of functional configuration, and ntegration of product structures; * Resistance to vibration, humidity, salt mist and high/low temperature; * Powerful ability to resist interference, convenient installation and use, and high performance-price ratio; * Remote monitoring of running parameters; * Automatic zero set of lubricating oil pressure * Accumulation of running period of diesel engine. 	
	

Supply documents

a. Alternator operation and maintenance manual CCS certificate	1PC 1PC
b. Engine operation and maintenance manual CCS certificate	1PC 1PC
c. Generator CCS certificate Overall drawings of the set ELECTRINIC SYSTEM DRAWING Bench test Packing list	1PC 1PC 1PC 1PC 1PC
d. Control panel CCS certificate operation and maintenance manual	1PC 1PC

Picture of packing



Etone Power Co.,Ltd.